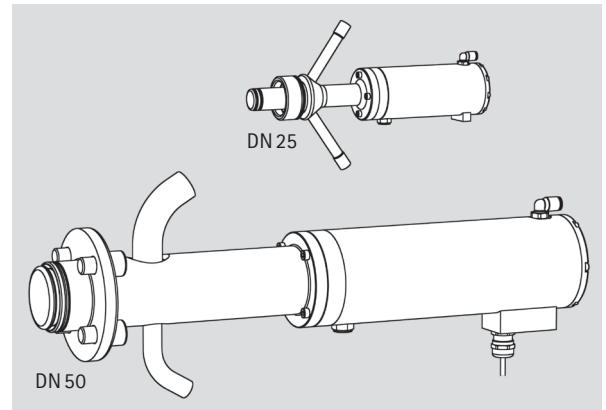


Data sheet

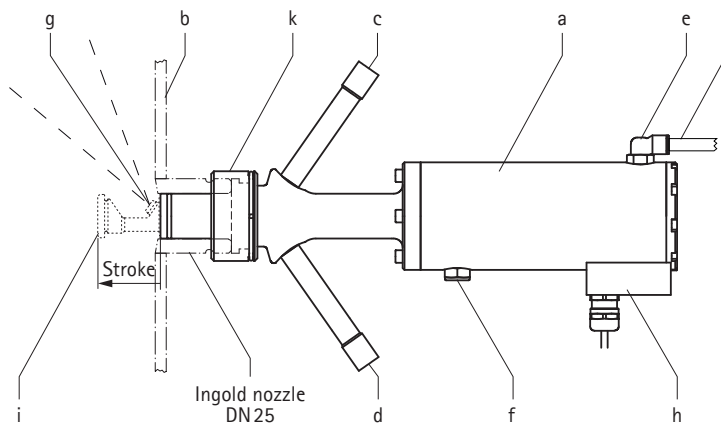
Jet CIP valve (Ingold/flange)

- for internal cleaning of reactors
- available with different jet nozzles and process connections
- efficient cleaning
- self-closing



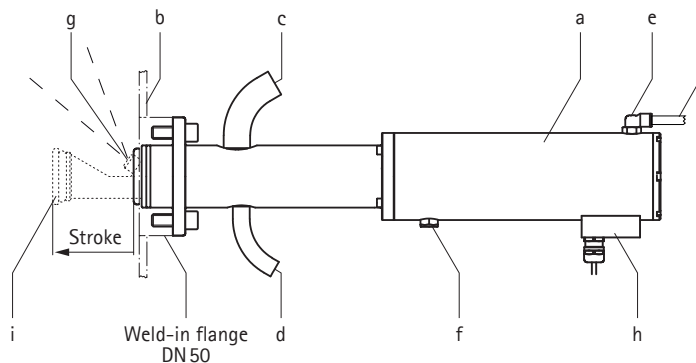
Technical data

Jet CIP valve DN 25



- a Jet CIP valve
- b Vessel wall
- c Inlet CIP / steam
- d Outlet CIP / steam
- e Threaded elbow connector for inlet control air
- f Outlet control air
- g Jet
- h Position indicator (optional) (standard configuration with blind cap)
- i Cleaning piston
- k Threaded union nut
- l Pneumatic hose

Jet CIP valve DN 50



Data sheet

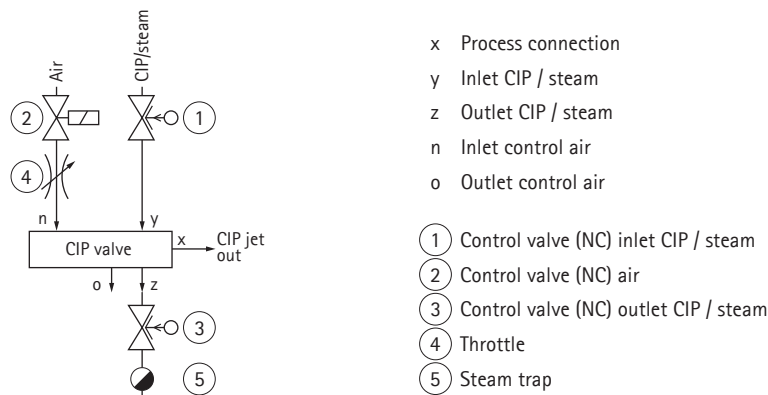
Jet CIP valve (Ingold/flange)

0540-04i TB/Reg. 14

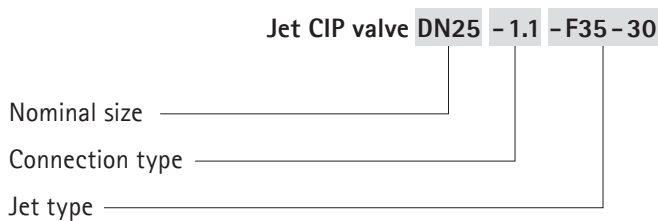
2/10

Operating temperature	max. 150°C	max. 302 F
Operating pressure CIP	max. 5 barg	max. 72.5 psi
Control pressure (Control air) suitable for pneumatic hose ø 6x1mm, material PA	4 ... 6 barg	58 ... 87 psi
Operating pressure vessel	max. 6 barg	max. 87 psi
Material (in contact with medium)	316 L	316 L
O-ring (in contact with medium)	EPDM / FEP-Silicone	EPDM / FEP-Silicone
Surface roughness (in contact with medium)	Ra 0.5 µm	Ra 0.5 µm
Weight	DN 25: ~ 3.1 kg DN 50: ~ 7 kg	DN 25: ~ 6.8 lb DN 50: ~ 15.4 lb
Suitable for vessel diameter	DN 25: 200 ... 800 mm DN 50: 700 ... 2300 mm	DN 25: 7.87 ... 31.5 inch DN 50: 27.65 ... 90.55 inch
Jet throughput	see characteristics diagram	
Cleaning time	see characteristics diagram	
Mounting orientation	horizontally	

Connections and control valves



Explanation for type designation



Data sheet

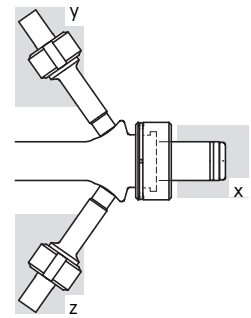
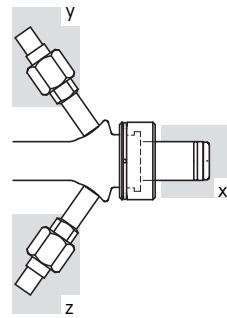
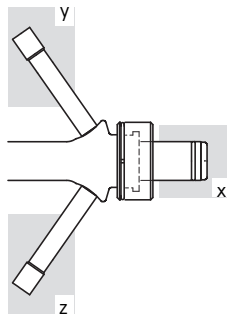
Jet CIP valve (Ingold/flange)

0540-04i TB/Reg. 14

3/10

Connection type

Jet CIP valve DN 25

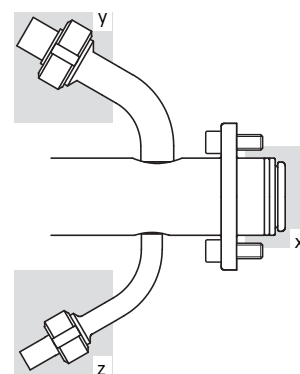
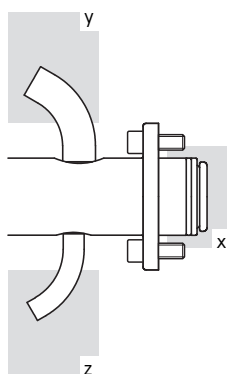


Connection type	- 1.1	- 1.2	- 1.3
Process connection			
x	for Ingold nozzle DN 25	for Ingold nozzle DN 25	for Ingold nozzle DN 25
Inlet CIP/steam	Welding connection DN 08 ²⁾	Flared tube connection DN 10 ¹⁾	Sterile union type A DN 08 ²⁾
Outlet CIP/steam	Welding connection DN 08 ²⁾	Flared tube connection DN 10 ¹⁾	Sterile union type A DN 08 ²⁾
z			

¹⁾ DIN 11850

²⁾ ISO 4200 / EN ISO 1127

Jet CIP valve DN 50



Connection type	- 2.1	- 2.2
Process connection		
x	for Weld-in flange DN 50	for Weld-in flange DN 50
Inlet CIP/steam	Welding connection DN 15 ²⁾	Sterile union type A DN 15 ²⁾
Outlet CIP/steam	Welding connection DN 08 ²⁾	Sterile union type A DN 08 ²⁾
z		

²⁾ ISO 4200 / EN ISO 1127

Data sheet

Jet CIP valve (Ingold/flange)

0540-04i TB/Reg. 14

4/10

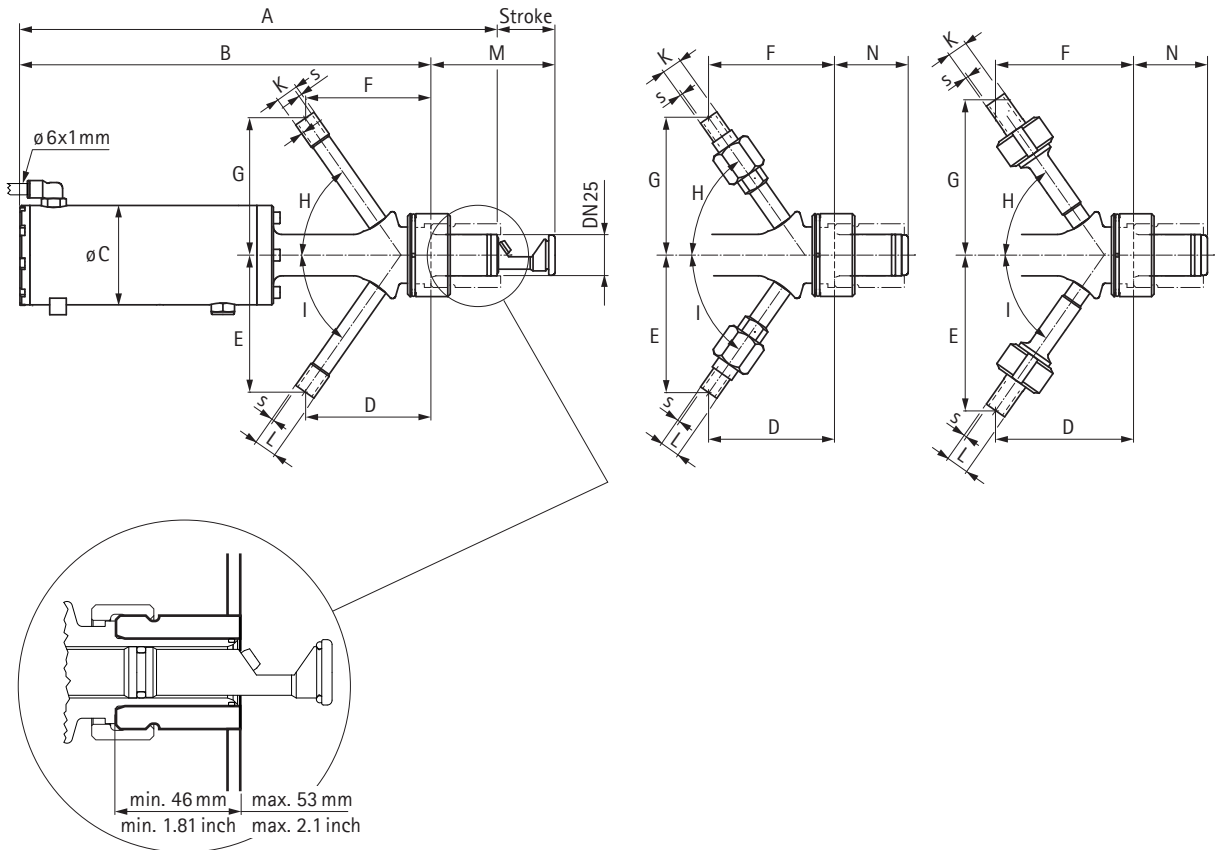
Dimensions

DN 25

- 1.1

- 1.2

- 1.3



Connection type	A [mm]	B [mm]	C [mm]	D [mm]	E [mm]	F [mm]	G [mm]	H/I [°]	Stroke [mm]	Kxs [mm]	Lxs [mm]	M [mm]	N [mm]
DN25 -1.1	292	243	60	71	82.5	71	82.5	55	31	13.5x1.6	13.5x1.6	80	49
DN25 -1.2	292	243	60	71.5	83	71.5	83	55	31	12x1	12x1	80	49
DN25 -1.3	292	243	60	79	94	79	94	55	31	13.5x1.6	13.5x1.6	80	49

Connection type	A [inch]	B [inch]	C [inch]	D [inch]	E [inch]	F [inch]	G [inch]	H/I [°]	Stroke [inch]	Kxs [inch]	Lxs [inch]	M [inch]	N [inch]
DN25 -1.1	11.50	9.57	2.36	2.80	3.25	2.80	3.25	55	1.22	0.53x0.063	0.53x0.063	3.15	1.93
DN25 -1.2	11.50	9.57	2.36	2.81	3.27	2.81	3.27	55	1.22	0.47x0.039	0.47x0.039	3.15	1.93
DN25 -1.3	11.50	9.57	2.36	3.11	3.70	3.11	3.70	55	1.22	0.53x0.063	0.53x0.063	3.15	1.93

Data sheet

Jet CIP valve (Ingold/flange)

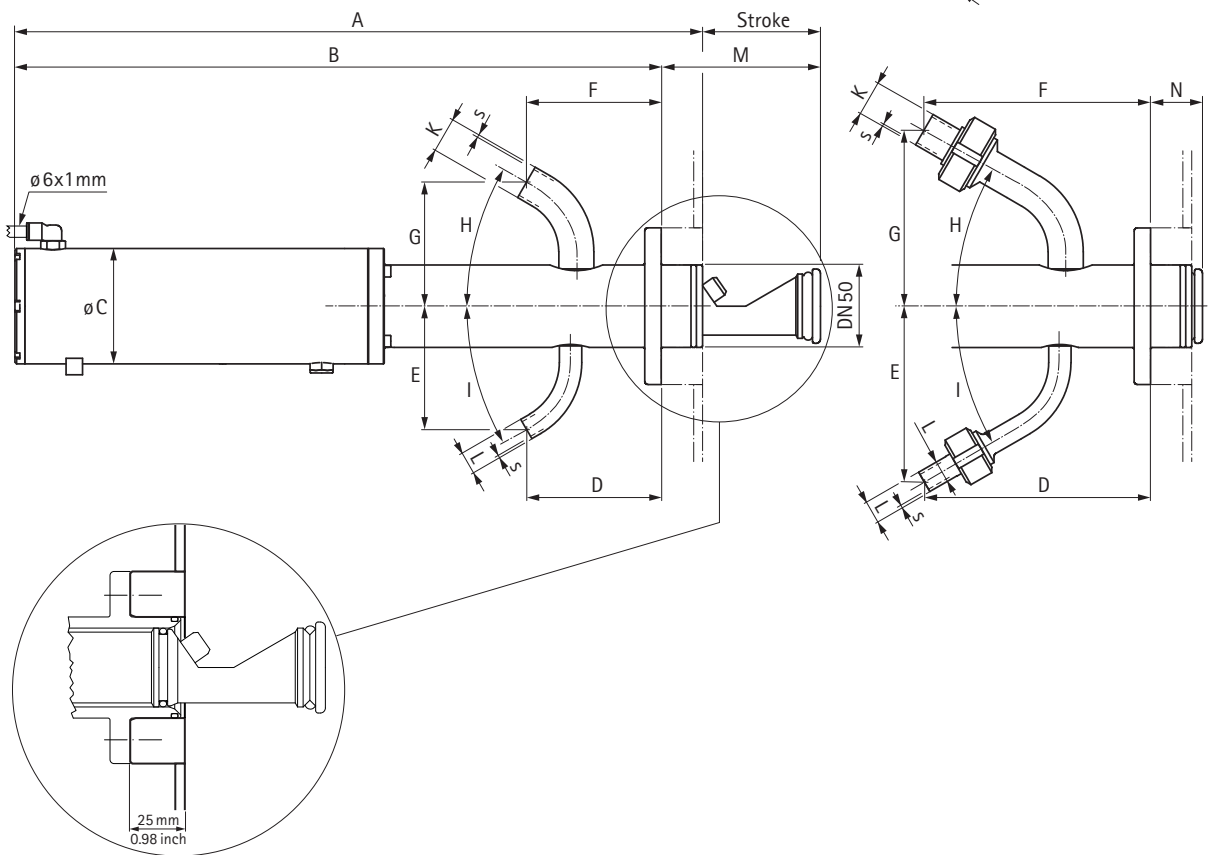
0540-04i TB/Reg. 14

5/10

DN 50

-2.1

-2.2



Connection type	A [mm]	B [mm]	C [mm]	D [mm]	E [mm]	F [mm]	G [mm]	H/I [°]	Stroke [mm]	Kxs [mm]	Lxs [mm]	M [mm]	N [mm]
DN50 -2.1	423.5	392	70	82	75	82	75	55	65	21.3x1.6	13.5x1.6	96.5	31.5
DN50 -2.2	423.5	392	70	137	107	137	107	30	65	21.3x1.6	13.5x1.6	96.5	31.5

Connection type	A [inch]	B [inch]	C [inch]	D [inch]	E [inch]	F [inch]	G [inch]	H/I [°]	Stroke [inch]	Kxs [inch]	Lxs [inch]	M [inch]	N [inch]
DN50 -2.1	16.67	15.43	2.76	3.23	2.95	3.23	2.95	30	2.56	0.84x0.063	0.53x0.063	3.80	1.24
DN50 -2.2	16.67	15.43	2.76	5.39	4.21	5.39	4.21	30	2.56	0.84x0.063	0.53x0.063	3.80	1.24

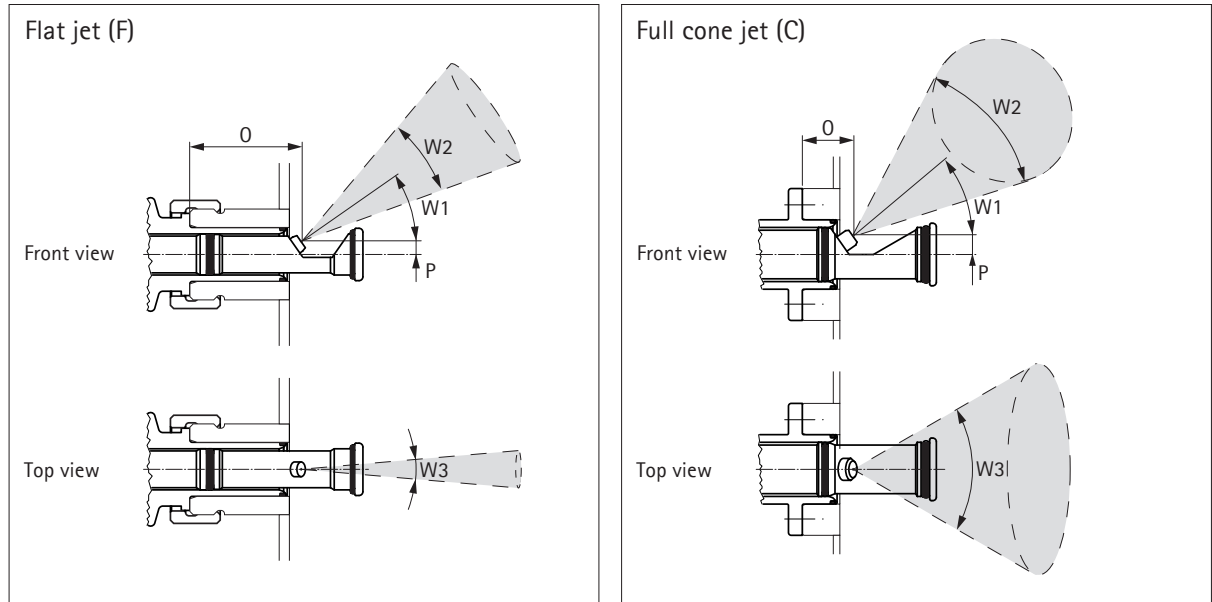
Data sheet

Jet CIP valve (Ingold/flange)

0540-04i TB/Reg. 14

6/10

Jet type



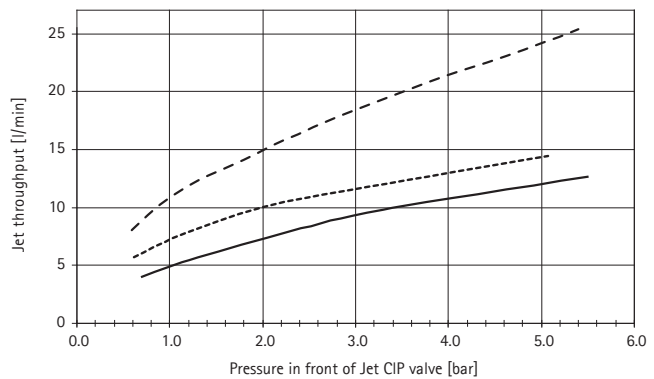
	Jet type		W1	W2	W3	O [mm (inch)]	P [mm (inch)]
DN25	-F35-30	(Flat jet)	35°	30°	~2-10°	51.4 (2.02)	5.9 (0.23)
	-F45-45	(Flat jet)	45°	45°	~2-10°	55.3 (2.175)	6.8 (0.27)
	-F55-60	(Flat jet)	55°	60°	~2-10°	57.2 (2.25)	7 (0.28)
50	-F35-30	(Flat jet)	35°	30°	~5-11°	36.5 (1.44)	13.2 (0.52)
	-F45-45	(Flat jet)	45°	45°	~5-11°	44 (1.73)	14 (0.55)
	-F55-60	(Flat jet)	55°	60°	~5-11°	44.5 (1.75)	13.8 (0.54)
	-C45-60	(Full cone jet)	45°	60°	~55-90°	46.2 (1.82)	15.4 (0.61)

Characteristics

Jet throughput

Volumetric flow through nozzles

- Jet CIP valve DN50 30°/45°/60° flat jet
- Jet CIP valve DN50 60° full cone jet
- Jet CIP valve DN25 30°/45°/60° flat jet



Data sheet

Jet CIP valve (Ingold/flange)

0540-04i TB/Reg. 14

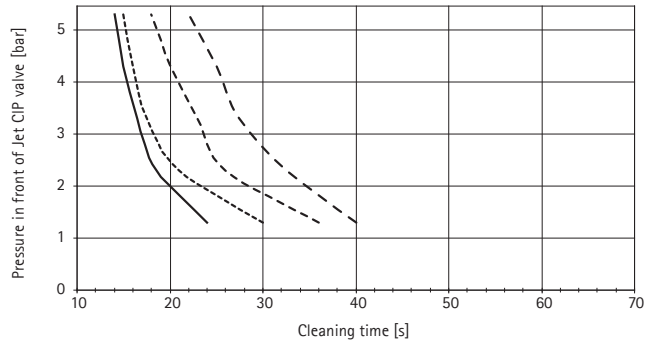
7/10

Jet CIP valve DN25

Cleaning time

45° flat jet (~12.6l/min / 5 bar)

- Distance 2.0m
- Distance 1.5m
- Distance 1m
- Distance 0.5m

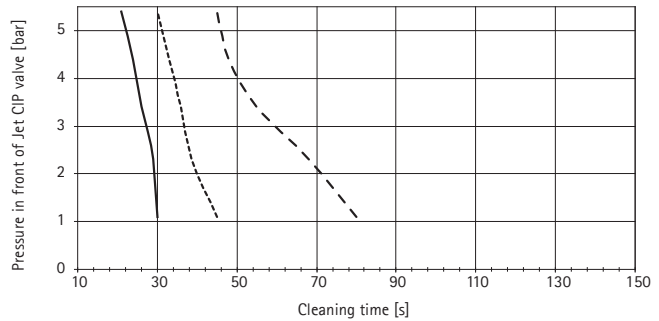


Jet CIP valve DN50

Cleaning time

45° flat jet (~25.3l/min / 5 bar)

- Distance 4m
- Distance 3m
- Distance 2m

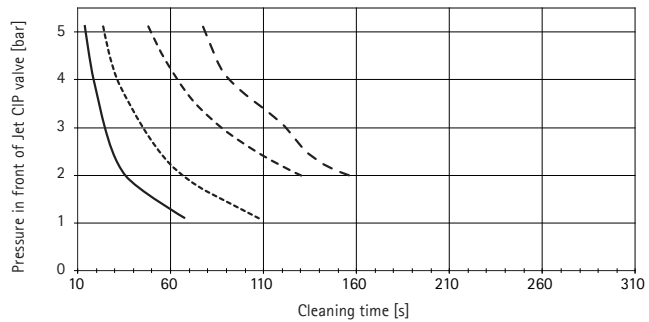


Jet CIP valve DN50

Cleaning time

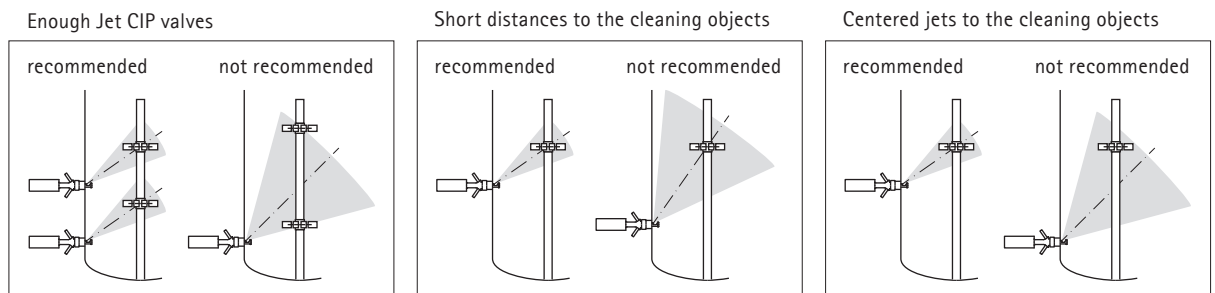
60° full cone jet (~14.4l/min / 5 bar)

- Distance 2.0m
- Distance 1.5m
- Distance 1m
- Distance 0.5m



Test situation: • Cleaning of protein dissolved in water, dried on stainless steel.
• Cleaning with cold water.

Deviations may occur in practice. Bioengineering cannot assume any liability for this data.



Not recommended arrangements results in insufficient cleaning.

Data sheet

Jet CIP valve (Ingold/flange)

0540-04i TB/Reg. 14

8/10

Jet CIP valve

Order no.

Jet CIP valve DN25 -1.1 - F35 - 30	112451.1
Jet CIP valve DN25 -1.1 - F45 - 45	112451.2
Jet CIP valve DN25 -1.1 - F55 - 60	112451.3
Jet CIP valve DN25 -1.2 - F35 - 30	112452.4
Jet CIP valve DN25 -1.2 - F45 - 45	112452.5
Jet CIP valve DN25 -1.2 - F55 - 60	112452.6
Jet CIP valve DN25 -1.3 - F35 - 30	112452.1
Jet CIP valve DN25 -1.3 - F45 - 45	112452.2
Jet CIP valve DN25 -1.3 - F55 - 60	112452.3
Jet CIP valve DN50 -2.1 - F35 - 30	112467.1
Jet CIP valve DN50 -2.1 - F45 - 45	112467.2
Jet CIP valve DN50 -2.1 - F55 - 60	112467.3
Jet CIP valve DN50 -2.1 - C45 - 60	112467.4
Jet CIP valve DN50 -2.2 - F35 - 30	112468.1
Jet CIP valve DN50 -2.2 - F45 - 45	112468.2
Jet CIP valve DN50 -2.2 - F55 - 60	112468.3
Jet CIP valve DN50 -2.2 - C45 - 60	112468.4

Documentation

Order no.

Data sheet	
Operation instructions	57526

Data sheet

Jet CIP valve (Ingold/flange)

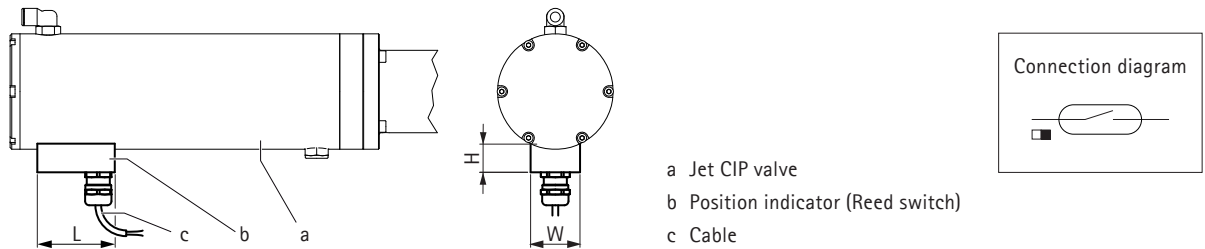
0540-04i TB/Reg. 14

9/10

Options

Position indicator

Indicates plunger position (extended/retracted). Available together with the Jet CIP valve or as a retrofit kit.



Technical data

L x W x H	47 x 30 x 17 mm	1.85 x 1.18 x 0.67 inch
Switching capacity	10W	10W
Current switching	max. 0.5 A	max. 0.5 A
Voltage switching	200 VDC	200 VDC
Material	304	304
Surface roughness	Ra 1.6	Ra 1.6
Cable	Silicone SIHF 2x0.5mm ² , without plug	Silicone SIHF 2x0.5mm ² , without plug
IP protection	IP 67	IP 67

	Order no.
Position Indicator DN 25, cable length 2 m	44076.3
Position Indicator DN 25, cable length 5 m	44076.6
Position Indicator DN 50, cable length 2 m	44076.2
Position Indicator DN 50, cable length 5 m	44076.5

Ingold nozzle DN 25	Order no.
Ingold nozzle DN 25 (see data sheet '0940-05 TB Ingold nozzle DN25')	112568

Weld-in flange DN 50	Order no.
Weld-in flange DN 50 (see data sheet '0640-19 TB Weld-in flange')	48629

Extended documentation ¹⁾	Order no.
Material certificate EN 10204-3.1 /USP /FDA	
Jet CIP valve DN25-1.1	57527.1
Jet CIP valve DN25-1.2	57527.2
Jet CIP valve DN25-1.3	57527.3
Jet CIP valve DN50-2.1	57527.4
Jet CIP valve DN50-2.2	57527.5

Data sheet

Jet CIP valve (Ingold/flange)

0540-04i TB/Reg. 14

10/10

Material certificate EN 10204-3.1 / USP / FDA

Weld logs

Surface reports

Jet CIP valve DN25-1.1	57528.1
Jet CIP valve DN25-1.2	57528.2
Jet CIP valve DN25-1.3	57528.3
Jet CIP valve DN50-2.1	57528.4
Jet CIP valve DN50-2.2	57528.5

¹⁾ only for materials and surfaces in contact with product

Spare parts

O-ring set	Order no.
O-ring set for Jet CIP valve DN 25 -1.1	56793
O-ring set for Jet CIP valve DN 25 -1.2	57596
O-ring set for Jet CIP valve DN 25 -1.3	57589
O-ring set for Jet CIP valve DN 50 -2.1	52307
O-ring set for Jet CIP valve DN 50 -2.2	57467

Threaded elbow connector 1/8"	Order no.
for Jet CIP valve DN 25 and DN 50	54821