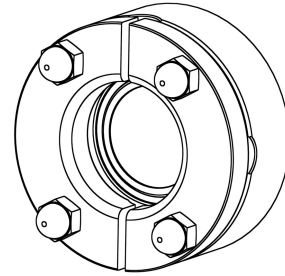


Data sheet

Weld-in flange Tri-Clamp

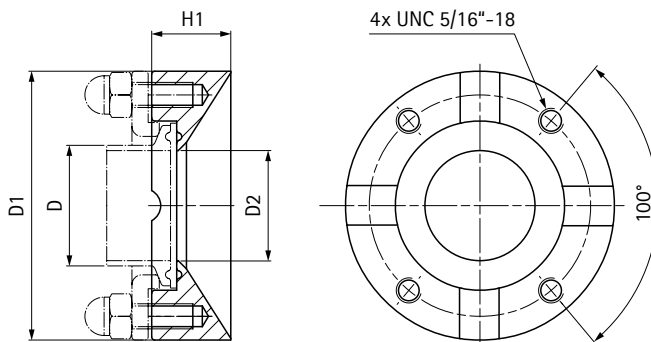
For installation of Jet CIP valve DN 25 / DN 50 (Tri-Clamp) on vessel.



Technical data

Operating pressure	max. 6 barg	max. 87 psi
Operating temperature	max. 150°C	max. 302 F
Material	316L	316L
Surface roughness / Surface roughness in contact with medium	Ra 1.2 µm / Ra 0.5 µm	Ra 1.2 µm / Ra 0.5 µm
For vessel diameter (weld-in flange 1.5"- TC 50.5)	200 ... 800 mm	7.87 ... 31.5 inch
For vessel diameter (weld-in flange 2.5"- TC 77.5)	700 ... 2300 mm	27.56 ... 90.55 inch

Dimensions



1.5"- TC 50.5	D	H1	D1	D2
[mm]	38.1	25	85	34.8
[inch]	1.5	0.98	3.35	1.37

2.5"- TC 77.5	D	H1	D1	D2
[mm]	63.5	25	112	60.5
[inch]	2.5	0.98	4.41	2.38

Weld-in flange 1.5"- TC 50.5	Order no.
Weld-in flange 1.5"- TC 50.5	112577

Weld-in flange 2.5"- TC 77.5	Order no.
Weld-in flange 2.5"- TC 77.5	112578

Documentation	Order no.
Data sheet	
Welding instructions	57904

Options

Extended documentation	Order no.
Material certificate EN 10204-3.1	57495